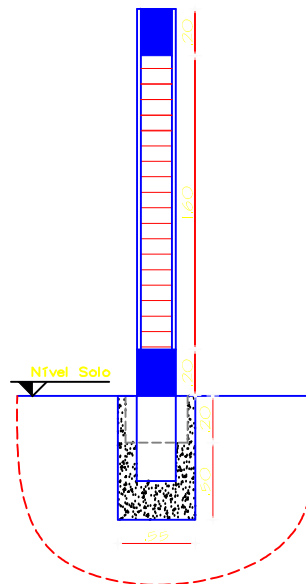
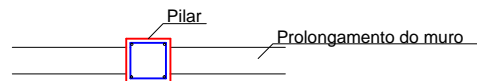
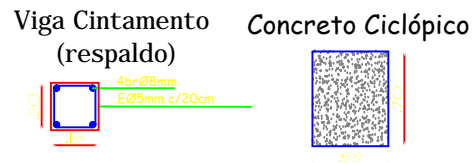
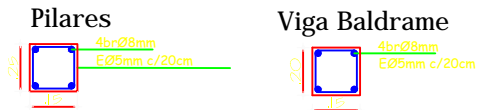



DETALHAMENTO DE PILARES E VIGAS



CORTE
ESCALA: 1/25

 <p>PREFEITURA MUNICIPAL DE SANTO ANGELO Secretaria Municipal de Obras e Serviços Urbanos Setor de Projetos</p>	<p>Obra: CONSTRUÇÃO MURO EMEI NEUZA GOULART BRIZOLA Endereço: Rua Darci da Silva Tavares</p>	
	<p>Prefeito Municipal: Luiz Valdir Andres</p>	<p>Prancha: 03/03</p>
<p>Especificação: Corte Muro</p>	<p>Responsável técnico: Eng. Civil Eder D. T. Guedes CREA-RS 145.466</p>	<p>Escala: INDICADA</p>
<p>Secretário de obras: Mauri Krupp</p>	<p>Chefe do Setor de Projetos: Eng. Civil José Carlos Ferraz</p>	<p>Data: OUT/2015</p>